



# WOMEN'S SOCCER

WVU ATHLETIC COMMUNICATIONS  
PO Box 877 | Morgantown, WV 26507-0877  
304.293.2821

WVUSPORTS.com

## 2016 Women's Soccer Schedule

Date	Opponent (TV)	Time
Aug. 19	at No. 2 Penn State ! (BTN)	T, 1-1 (2ot)
Aug. 21	vs. Buffalo !	W, 2-0
Aug. 26	No. 8 Clemson	W, 1-0
Aug. 28	Saint Francis	W, 3-1
Sept. 1	Purdue	7 p.m.
Sept. 4	No. 19 Ohio State	6 p.m.
Sept. 9	at Duke (WatchESPN)	7 p.m.
Sept. 16	Princeton	7 p.m.
Sept. 18	Georgetown	1 p.m.
Sept. 23	at Richmond	7:30 p.m.
Sept. 30	Baylor*	7 p.m.
Oct. 2	Oklahoma* (ESPNU)	3 p.m.
Oct. 7	at Kansas*	8 p.m.
Oct. 9	at Iowa State*	2 p.m.
Oct. 14	Texas Tech* (ESPNU)	6 p.m.
Oct. 21	at TCU*	8 p.m.
Oct. 23	at Texas* (FSN)	6 p.m.
Oct. 28	Oklahoma State*	7 p.m.
Nov. 2-6	Big 12 Soccer Championship ^	TBA

! - Penn State Invitational (University Park, Pa.)  
\* - Big 12 opponent  
^ - Big 12 Soccer Championship (Kansas City, Mo.)  
All times Eastern and subject to change

## Tracking the Mountaineers

### Media Services

The WVU athletic communications office will be available throughout the 2016 women's soccer season to accommodate any media requests. Members of the media wishing to interview a player or member of the coaching staff during the week should contact women's soccer SID Shannon McNamara at (304) 293-2821 or by email at Shannon.McNamara@mail.wvu.edu.

### Game Services

The WVU athletic communications staff will be at your service throughout the match. Press seating is located in the media booth of the Bill Maloney Press Box. Internet access is available for working media members.

### WVUsports.com

WVUsports.com is the place for media and fans to go for the latest news on Mountaineer women's soccer. Streamed audio and video broadcasts will be available on WVU's official athletic website, along with live stats to keep track of every score and save. Game notes are made available in PDF format one day prior to gameday.

### Big 12 Digital Media

Fans can track every Big 12 soccer match throughout the season with the live in-game scoreboard at Big12Sports.com. You also can follow the Big 12 on Twitter (@Big12Conference), Facebook (facebook.com/Big12), Instagram (@Big12Conference) and YouTube (youtube.com/big12conference).



@WVUWomensSoccer  
@WVUizzoBrown  
@WVUSports



/WVUWomensSoccer



@WVUWomensSoccer



@WVUWomensSoccer



## No. 4 West Virginia vs. Purdue, No. 19 Ohio State

Dick Dlesk Soccer Stadium | Morgantown, W.Va.

No. 4 West Virginia (3-0-1)  
vs. Purdue (2-2)

**Date:** Thursday, Sept. 1

**Time:** 7 p.m. EST

**WebStream:** WVUsports.com

**TV:** None

**Radio:** None

**Live Stats:** WVUsports.com

No. 4 West Virginia (3-0-1)  
vs. No. 19 Ohio State (4-0)

**Date:** Sunday, Sept. 4

**Time:** 6 p.m. EST

**WebStream:** WVUsports.com

**TV:** None

**Radio:** None

**Live Stats:** WVUsports.com

### The Kick Off

- The No. 4-ranked West Virginia University women's soccer team closes a two-week homestand against a pair of Big Ten Conference opponents. WVU opens with Purdue on Thursday, Sept. 1, at 7 p.m., before meeting No. 19 Ohio State on Sunday, Sept. 4, at 6 p.m.
- Sunday's match against OSU will be WVU's third contest against a ranked opponent in as many weeks. The squad is 1-0-1 against ranked teams in 2016, earning a 1-1 tie at No. 2 Penn State and defeating No. 8 Clemson, 1-0.
- With its win over the Tigers, WVU has now defeated at least one top-10 opponent in each of the last 12 years.
- WVU will face one ranked opponent in each of the first three weeks of the season for the first time since 2009 and the third time since 2007. WVU went 1-1-1 against ranked opponents in the first three weeks of the 2009 season and 1-2 against ranked opponents in 2007.
- WVU is unbeaten in its last 27 straight home matches and has not lost since a 2-0 defeat to No. 21 Duke on Aug. 29, 2014.
- Coach Nikki Izzo-Brown earned her 300th career victory with a 2-0 win over Buffalo on Aug. 21. She needs 11 wins to secure her 300th victory at WVU.

### A Look at the Boilermakers

- Purdue opened the 2016 season with a 2-2 showing, including a 1-1 split in overtime matches.
- Most recently, the Boilermakers came from behind to defeat Cincinnati, 2-1, in overtime, on Aug. 28. The squad opened the weekend with a 5-1 defeat at Baylor.
- Senior forward Hannah Leinert paces with six points (2 G, 2 A). Senior Jordan Ginther shows a 1-2 record in net and a 2.65 GAA.
- WVU is 2-1-1 all-time against Purdue. The teams last met in 2012, a 2-2 (2OT) draw in West Lafayette on Sept. 9.

### A Look at the Buckeyes

- A 1-0 (2OT) win at Florida Gulf Coast on Aug. 28 helped push OSU to 4-0. Freshman Haley Walker-Robinson netted the golden goal.
- Senior forward Lindsay Agnew paces with six points (2 G, 2 A). Senior Jillian McVicker has started all four matches in net and shows a 0.73 GAA to go along with 13 saves.
- Senior forward Nichelle Prince earned Bronze at the 2016 Rio Summer Olympic Games with Canada, playing alongside Mountaineers Kadeisha Buchanan and Ashley Lawrence.
- WVU is 4-4-1 all-time against OSU. In their last meeting WVU earned a 2-0 win over No. 15 OSU in Columbus on Sept. 11, 2015.

## NCAA Statistical Rankings

**Team**  
• Scoring Off.: 1.75 (97)  
• Points Avg.: 5.0 (93)  
• GAA: 0.474 (36)  
• Shutout Pct.: 0.5 (55)  
• Save Pct.: 0.857 (66)



**Individual Leaders**  
• Goals/G: N/A  
• Assists/G: A. Pierre-Louis, 0.5 (101)  
• Points/G: N/A  
• GWG: H. Kaleiohi, K. Buchanan, A. Pierre-Louis, 1.0 (48)  
• GAA: R. Foster, 0.33 (32)

**Team**  
• Scoring Off.: 1.5 (128)  
• Points Avg.: 4.25 (136)  
• GAA: 2.203 (276)  
• Shutout Pct.: 0.0 (229)  
• Save Pct.: 0.55 (317)



**Individual Leaders**  
• Goals/G: M. Lasky, 0.67 (128)  
• Assists/G: H. Leinert, 0.5 (101)  
• Points/G: H. Leinert, 1.5 (131)  
• GWG: M. Lasky, 2.0 (3)  
• GAA: N/A

**Team**  
• Scoring Off.: 2.5 (36)  
• Points Avg.: 6.75 (46)  
• GAA: 0.716 (94)  
• Shutout Pct.: 0.5 (55)  
• Save Pct.: 0.824 (110)



**Individual Leaders**  
• Goals/G: N/A  
• Assists/G: L. Agnew, 0.5 (101)  
• Points/G: L. Agnew, 1.5 (131)  
• GWG: Four Athletes, 1.0 (48)  
• GAA: J. McVicker, 0.733 (93)

NCAA rankings as of Aug. 30



## Head Coach Nikki Izzo-Brown

- Total Years Coaching: 22nd Season
- At WVU: 21st Season
- Career Record: 302-106-45 (.716)
- Record at WVU: 289-101-45 (.716)

### Coaching Experience

- West Virginia Head Coach (1996-present)
- West Virginia Wesleyan (1994)

### Career Coaching Highlights

- Only coach in Mountaineer women's soccer history
- Five-time NSCAA Regional Coach of the Year
- Six-time conference coach of the year
- Four-time reigning Big 12 Coach of the Year
- Led WVU to 16 straight NCAA appearances
- Has won 14 conference titles with the Mountaineers, including nine in the last six seasons
- Coached 15 players who went on to play professionally
- Coached 20 All-Americans
- Coached 14 MAC Hermann Trophy Candidates
- Coached 18 Academic All-Americans
- Coached 18 conference players of the year
- Coached two 2016 Rio Summer Olympic Bronze medalists
- Coached two FIFA Women's World Cup participants, including the 2015 Best Young Player honoree (Kadeisha Buchanan)
- Women's soccer won school's first Big 12 championship in 2012; only WVU program to win multiple Big East and Big 12 Championship titles
- WVU has defeated a top-10 opponent in each of the last 12 seasons
- Has never had a losing season as a head coach
- Has led WVU to 16 straight 10-plus win seasons

### With U.S. Women's National Teams

- Assistant coach at the 2012 training camps with the U.S. U-18, U-20 and U-23 squads
- Assistant coach for the 2007 U.S. U-20 National Team

### Playing Experience

- Four year All-American at Rochester (1982-92)

### Education

Rochester, 1993

- Bachelor's degree (psychology)

West Virginia Wesleyan, 1994

- Master's degree (business administration)

## Mountaineers At A Glance

### Women's Soccer Coaching Staff and History

**Head Coach:** Nikki Izzo-Brown (Rochester '93)

**Record at WVU:** 289-101-45 (21 years)

**Career Record:** 302-106-45 (22 years)

**Associate Head Coach:** Lisa Stoia (10th season)

**Assistant Coach:** Marisa Kanela (Seventh season)

**All-Time W. Soccer Record (Years):** 289-101-45 (21 years)

**Founded:** 1995 (first season - 1996)

**NCAA Tournament Appearances (Last):** 16 straight (2015)

**Highest NCAA Appearance (Last):** Elite Eight (2015)

**Big 12 Conference Championships (last):** 6 (2015)

**Big East Conference Championships (last):** 8 (2011)

**Colors:** Old Gold and Blue

**Nickname:** Mountaineers

**Facility (capacity):** Dick Dlesk Soccer Stadium (1,650)

### University Information

**Location:** Morgantown, W.Va.

**Enrollment:** 31,514

**Founded:** 1867

**President:** E. Gordon Gee

**Director of Athletics:** Shane Lyons

**Web Address:** WVUsports.com

## Mountaineer Rosters

### Alphabetical

#	Name	Yr.	Pos.	Ht.	Hometown
5	Michaela Abam	Jr.	F	5-7	Houston, Texas
20	Hannah Abraham	So.	F/D	5-5	Fairchance, Pa.
24	Carly Black	Sr.	D	5-8	Horsham, Pa.
88	Kadeisha Buchanan	Sr.	D	5-7	Brampton, Ontario
28	Amanda Burns	Fr.	M	5-0	Clarence, N.Y.
19	Laurel Carpenter	So.	M	5-9	McMurray, Pa.
7	Grace Cutler	So.	F	5-9	Fort Collins, Colo.
14	Patricia Fernandez	So.	M	5-0	Pearland, Texas
26	Vanessa Flores	So.	M	5-7	Baytown, Texas
25	Rylee Foster	Fr.	GK	5-9	Cambridge, Ontario
2	Jade Gentile	Fr.	M/F	5-4	Baldwinsville, N.Y.
99	Sh'Nia Gordon	So.	F	5-7	Ocklawaha, Fla.
6	Heather Kaleiohi	Jr.	F	5-7	San Diego, Calif.
9	Ashley Lawrence	Sr.	M	5-6	Toronto, Ontario
22	Alli Magaletta	Jr.	M	5-6	Chesterfield, Mo.
16	Easter Mayi Kith	So.	D	5-6	Quebec City, Quebec
3	Brooke Myers	Fr.	GK	5-11	Middletown, Pa.
1	Michelle Newhouse	Jr.	GK	5-8	Pinch, W.Va.
97	Dalanda Ouendeno	So.	D	5-5	Paris, France
11	Amandine Pierre-Louis	Jr.	D	5-7	Montreal, Quebec
10	Carla Portillo	Jr.	M	5-1	Mississauga, Ontario
13	Amanda Saymon	So.	M	5-5	Bridgeport, W.Va.
4	Bianca St. Georges	So.	D	5-5	St. Felix de Valois, Quebec
12	Macy Stalnaker	So.	F/M	5-4	Butler, Pa.
18	Ashley Woolpert	Sr.	F/M	5-7	Springboro, Ohio

### Numerical

#	Name	Pos.	Ht.	Yr.	Hometown
1	Michelle Newhouse	Jr.	GK	5-8	Pinch, W.Va.
2	Jade Gentile	Fr.	M/F	5-4	Baldwinsville, N.Y.
3	Brooke Myers	Fr.	GK	5-11	Middletown, Pa.
4	Bianca St. Georges	So.	D	5-5	St. Felix de Valois, Quebec
5	Michaela Abam	Jr.	F	5-7	Houston, Texas
6	Heather Kaleiohi	Jr.	F	5-7	San Diego, Calif.
7	Grace Cutler	So.	F	5-9	Fort Collins, Colo.
9	Ashley Lawrence	Sr.	M	5-6	Toronto, Ontario
10	Carla Portillo	Jr.	M	5-1	Mississauga, Ontario
11	Amandine Pierre-Louis	Jr.	D	5-7	Montreal, Quebec
12	Macy Stalnaker	So.	F/M	5-4	Butler, Pa.
13	Amanda Saymon	So.	M	5-5	Bridgeport, W.Va.
14	Patricia Fernandez	So.	M	5-0	Pearland, Texas
16	Easter Mayi Kith	So.	D	5-6	Quebec City, Quebec
18	Ashley Woolpert	Sr.	F/M	5-7	Springboro, Ohio
19	Laurel Carpenter	So.	M	5-9	McMurray, Pa.
20	Hannah Abraham	So.	F/D	5-5	Fairchance, Pa.
22	Alli Magaletta	Jr.	M	5-6	Chesterfield, Mo.
24	Carly Black	Sr.	D	5-8	Horsham, Pa.
25	Rylee Foster	Fr.	GK	5-9	Cambridge, Ontario
26	Vanessa Flores	So.	M	5-7	Baytown, Texas
28	Amanda Burns	Fr.	M	5-0	Clarence, N.Y.
88	Kadeisha Buchanan	Sr.	D	5-7	Brampton, Ontario
97	Dalanda Ouendeno	So.	D	5-5	Paris, France
99	Sh'Nia Gordon	So.	F	5-7	Ocklawaha, Fla.

### Pronunciation Guide

Michaela Abam	uh-BAM
Kadeisha Buchanan	kuh-Deesh-uh
Rylee Foster	Rye-lee
Jade Gentile	gen-til-E
Sh'Nia Gordon	shh Ny-ah
Heather Kaleiohi	cal-E-oh-HE
Alli Magaletta	MAG-a-letta

Easter Mayi Kith	My-ah Keith
Dalanda Ouendeno	when-deno
Amandine Pierre-Louis	ama-Dine
Carla Portillo	poor-TEE-yo
Bianca St. Georges	St. George

Coach Marisa Kanela	kuh-nella
Coach Lisa Stoia	stoy-uh

## National Rankings

(as of 8/30/16)

NSCAA Poll			TopDrawerSoccer.com Top 25			Soccer America Top 25			Hero Sports Rankings		
Rank	Team	Record	Rank	Team	Record	Rank	Team	Record	Rank	Team	Record
1	Florida State	3-0	1	Stanford	3-0	1	Stanford	3-0	1	Florida State	3-0
2	Stanford	3-0	2	Florida State	3-0	2	Duke	3-0	2	Stanford	3-0
3	Virginia	4-0	3	Virginia	4-0	3	<b>West Virginia</b>	<b>3-0-1</b>	3	Virginia	4-0
4	<b>West Virginia</b>	<b>3-1-1</b>	4	<b>West Virginia</b>	<b>3-0-1</b>	4	Virginia	4-0	4	Penn State	1-1-1
5	Florida	3-1	5	Duke	3-1	5	Florida	3-1	5	Florida	3-1
6	Clemson	3-1	6	Penn State	1-1-1	6	Clemson	3-1	6	Clemson	3-1
7	Duke	3-1	7	North Carolina	3-0	7	Rutgers	3-0-1	7	<b>West Virginia</b>	<b>3-0-1</b>
8	North Carolina	3-0	8	Rutgers	3-0-1	8	North Carolina	3-0	8	Virginia Tech	4-0
9	Minnesota	4-0	9	Clemson	3-1	9	Arkansas	3-0	9	BYU	2-1
10	BYU	2-1	10	Florida	3-1	10	Duke	3-1	10	USC	1-2
11	UCLA	2-1	11	Connecticut	3-1	11	UCLA	2-1	11	South Carolina	3-0-1
12	Rutgers	3-0-1	12	Virginia Tech	4-0	12	BYU	2-1	12	Duke	3-1
13	Penn State	1-1-1	13	Minnesota	4-0	13	Penn State	1-1-1	13	North Carolina	3-0
14	Texas A&M	3-0-1	14	USC	1-2	14	Auburn	3-1	14	California	3-1
15	Virginia Tech	4-0	15	Auburn	3-1	15	California	3-1	15	Minnesota	4-0
17	Arkansas	4-0	16	BYU	2-1	16	Virginia Tech	4-0	16	Auburn	3-1
18	Connecticut	3-1	17	California	3-1	17	Ohio State	4-0	17	Texas A&M	2-2
19	California	3-1	18	Texas A&M	2-2	18	Long Beach State	2-0-1	18	Santa Clara	2-2
20	USF	4-0	19	Ohio State	4-0	19	Connecticut	3-1	19	Texas Tech	3-0-1
21	Auburn	3-1	20	Santa Clara	2-2	20	Texas A&M	2-2	20	Northwestern	3-0
22	Santa Clara	2-2	21	UCLA	2-1	21	Texas Tech	3-0-1	21	Ohio State	4-0
23	Notre Dame	3-1	22	Boston College	3-0-1	22	South Carolina	3-0-1	22	Notre Dame	2-1
24	Northwestern	3-0	23	Long Beach State	2-0-1	23	Boston College	3-0-1	23	Rutgers	3-0-1
25	Pepperdine	3-1	24	USF	4-0	24	Minnesota	4-0	24	Arizona	1-1-1
			25	Arizona	1-1-1	25	Santa Clara	2-2	25	Long Beach State	2-0-1

## Tracking the Mountaineers in the Polls

	NSCAA	TDS.com	SA	HS	RPI
Preseason .....	6.....	5.....	--.....	5.....	--
Week 1 .....	7.....	6.....	4.....	8.....	--
Week 2 .....	4.....	4.....	3.....	7.....	--

NSCAA: National Soccer Coaches Association of America  
TDS.com: TopDrawerSoccer.com

SA: Soccer America  
HS: Hero Sports

## Big 12 Standings

(as of 8/30/16)

	Big 12			Overall		
	W-L	Streak	Pts.	W-L	Streak	
TCU	0-0	--	--	3-0	W3	
Texas Tech	0-0	--	--	3-0-1	W1	
<b>West Virginia</b>	<b>0-0</b>	--	--	<b>3-0-1</b>	<b>W3</b>	
Baylor	0-0	--	--	3-1	W2	
Iowa State	0-0	--	--	2-1	W2	
Texas	0-0	--	--	2-1	W2	
Kansas	0-0	--	--	2-1-1	--	
Oklahoma	0-0	--	--	2-1-1	L1	
Oklahoma State	0-0	--	--	2-1-1	W1	



**BIG 12 CONFERENCE**

**The Last Time Out:** The Mountaineers opened their 2016 home season at Dick Dlesk Soccer Stadium with two wins, a 1-0 victory over No. 8 Clemson on Aug. 26 and a 3-1 result against Saint Francis on Aug. 28. Junior Amandine Pierre-Louis' brilliant individual effort against the Tigers was the difference, as her goal in the 57th minute delivered WVU a win over a top-10 team for the 12th straight season. Freshman Rylee Foster played all 90 minutes in net and made two saves, as the WVU defense held Clemson to just six shots in front of 2,019 fans. After falling behind early on Sunday, WVU scored three unanswered goals against the Red Flash, including senior Kadeisha Buchanan's game-winner in the 55th minute. Sophomore Sh'Nia Gordon added two goals, and junior Michelle Newhouse made her first career start in net and finished with one save.

**Challenging Slate:** Year after year, coach Nikki Izzo-Brown challenges the Mountaineers with one of the nation's hardest schedules, and 2016 is no different, as the team will meet seven squads that qualified for the 2015 NCAA Tournament, including matches against reigning National Champion Penn State and runner-up Duke on their home fields.

In total, WVU, coming off an NCAA Elite Eight season in 2015, will face three teams from the Big Ten Conference and two from the Atlantic Coast Conference (ACC).

**Catch Us When You Can:** Four of the Mountaineers' regular-season contests will be broadcast for national audiences: at Penn State on Aug. 19 (Big Ten Network), home against Oklahoma on Oct. 2 and Texas Tech on Oct. 14 (ESPNU), and at Texas on Oct. 23 (FOX Sports Network). WVU is 0-0-1 in nationally televised games in 2016, having earned a 1-1 double-overtime draw at No. 2 Penn State on Aug. 19. The scheduled television games are the most for WVU since the squad was featured in seven televised matches in 2009.

**Picked to Win Again:** The Mountaineers were unanimously picked No. 1 by the league coaches in the 2016 Big 12 Conference Soccer Preseason Poll. It marked the fourth straight season the conference coaches selected WVU to win the Big 12 crown; the team was not chosen in 2012, its first season in the league. WVU is the only current conference team to be tabbed No. 1 four straight seasons and the first squad since Texas A&M (2004-07) to earn a conference-best four straight preseason No. 1 rankings.

**The Best of the Big 12:** A conference-best four Mountaineers were named to the Preseason All-Big 12 Soccer Team: unanimous selections Kadeisha Buchanan, Ashley Lawrence and Michaela Abam, and Carla Portillo.

**We Are the Champions! (x4):** With a 2-1 overtime victory at Oklahoma State on Oct. 23, the Mountaineers clinched the 2015 Big 12 Conference regular-season title, their fourth straight. The Mountaineers have won the title each season since joining the Big 12 in 2012, and WVU is the only program to win four straight outright championships; Texas A&M won four straight titles from 2004-07, but its first was not an outright win. Also the 2015 Big 12 preseason favorite, WVU's accomplishment marked the ninth time in Big 12 history the preseason favorite in the coaches poll also won the title. The Mountaineers own a 27-1-3 all-time record in Big 12 play and are unbeaten at Dick Dlesk Soccer Stadium.

Dating back to its days in the Big East Conference, WVU has won five straight conference regular-season crowns and nine since its first title in 2002. WVU has won nine regular season and championship conference titles in six seasons and 14 since 2002.

**International Experience:** When they are not competing with WVU, several Mountaineers currently compete with or have competed with the top international teams:

**Michaela Abam (Jr., F)** - United States U-19 National Team (2014-15)  
**Kadeisha Buchanan (Sr., D)** - Full Canadian Women's National Team (2012-present)  
**Rylee Foster (Fr., GK)** - Canadian U-17, U-20 Teams (2013-present)  
**Vanessa Flores (So., M)** - Mexican U-20 National Team (2015-present)  
**Ashley Lawrence (Sr., M)** - Full Canadian Women's National Team (2012-present)  
**Easther Mayi Kith (So., D)** - Canadian U-17 National Team (2014-15)  
**Amandine Pierre-Louis (Jr., D)** - Canadian U-20 National Team (2014)  
**Carla Portillo (Jr., M)** - Canadian U-20 National Team Pool (2014-15)  
**Bianca St. Georges (So., D)** - Canadian U-17, U-20 Teams (2014-present)

**Hermann Hopefuls Again:** For the second straight season, defender Kadeisha Buchanan and midfielder Ashley Lawrence, both seniors, were named to the MAC Hermann Trophy Watch List. College soccer's version of the Heisman Trophy, the award represents the highest level of individual achievement in the sport.

This year's recognition is the third straight for Buchanan and the second straight for Lawrence. It is the fourth time since 2007 WVU has had two student-athletes land on the first list of the season. Nine different Mountaineers have been named to the initial Watch List 14 times since 2003. WVU also has had six semifinalists, including Buchanan and Lawrence. Buchanan was the program's first finalist in 2015 and is the only finalist to return to the list this year.

**Mountaineers Win Bronze!** For the second straight summer, seniors Kadeisha Buchanan and Ashley Lawrence gained experience with Canada's National Team on the world's biggest stage, as the duo helped the nation claim Bronze at the 2016 Rio Summer Olympics. Lawrence earned an assist on Canada's first goal in the team's 2-1 win over Brazil in the Bronze medal game.

The first WVU women's soccer players named to an Olympic roster, Buchanan and Lawrence also were the first WVU women's soccer players named to a World Cup roster and started all five of Canada's matches at the 2015 FIFA Women's World Cup. Buchanan was named the Best Young Player, landed on the FIFA Women's World Cup Canada 2015 All-Star Squad and was featured on a Canadian commemorative stamp. Lawrence scored Canada's lone goal in a 1-1 draw against Netherland in Group A play; the score helped advance Canada to the knockout stage for only the second time in six tries.

**O Canada!** Seven Mountaineers on the 2016 roster hail from Canada: Kadeisha Buchanan (Ontario), Rylee Foster (Ontario), Ashley Lawrence (Ontario), Easther Mayi Kith (Quebec), Amandine Pierre-Louis (Quebec), Carla Portillo (Ontario) and Bianca St. Georges (Quebec).

**For Starters:** Six Mountaineers have earned their first career starts this season - midfielders Patricia Fernandez, Vanessa Flores and Alli Magaletta, defender Macy Stalnaker and goalkeepers Rylee Foster and Michelle Newhouse. In total, WVU has 16 players with at least one career start to their name.

## WVU's 2016 Game-Winning Goals

Name	Opponent	Time	Score	Final
Heather Kaleiohi	vs. Buffalo	21:27	1-0	2-0
Amandine Pierre-Louis	No. 8 Clemson	56:55	1-0	1-0
Kadeisha Buchanan	Saint Francis	54:24	2-1	3-1

### Mountaineer Conference Title Count (14)

2015	Big 12 regular-season title
2014	Big 12 Soccer Championship title Big 12 regular-season title
2013	Big 12 Soccer Championship title Big 12 regular-season title
2012	Big 12 regular-season title
2011	Big East Soccer Tournament title Big East American Division title
2010	Big East Soccer Tournament title
2008	Big East American Division title
2007	Big East Soccer Tournament title Big East American Division title
2006	Big East American Division title
2002	Big East Mid-Atlantic Division title



**Big Benchmark Hit:** Coach Nikki Izzo-Brown played a large role in making sure the Mountaineers' 2016 season-opening weekend was memorable, as the team's 2-0 victory over Buffalo on Aug. 21, at the Penn State Invitational, was career win No. 300 for the 21-year WVU women's soccer head coach.

Izzo-Brown's 22-year coaching record now stands at 302-106-45 (.716). Before founding the WVU women's soccer program in 1995, she spent one season at West Virginia Wesleyan in 1994. Izzo-Brown has posted a winning record in all 20 seasons with the Mountaineers and has led WVU to 10 wins or more each year but 1999. WVU earned a program-record 19 victories in 2015.

**The Next 250:** In just 21 seasons, the WVU women's soccer team has earned 289 program wins, an average of 14 victories per season; the team needs 11 wins to earn program victory No. 300. The Mountaineers scored program win No. 250 with their 1-0 victory over Baylor at the 2013 Big 12 Soccer Championship semifinal on Nov. 8, in Kansas City, Missouri. WVU earned its 275th program victory with a 1-0 overtime win against Buffalo on Sept. 18, 2015, at Dick Dlesk Soccer Stadium.

**Morgantown Magic:** The Mountaineers have developed a true home field advantage, going 109-17-13 at Dick Dlesk Soccer Stadium since its opening in August 2004.

The Mountaineers are unbeaten in their last 27 straight home matches and have not dropped a contest since a 2-0 loss to No. 21 Duke on Aug. 29, 2014.

WVU posted a top-10 attendance mark in its first home match of the 2016 season, as 2,019 fans were on hand to cheer the Mountaineers on to a 1-0 win over No. 8 Clemson on Aug. 26. The crowd was the fourth-largest women's crowd in stadium history.

The Mountaineer attendance record is 3,000+, set on Nov. 30, 2007, in the team's 1-0 loss to USC in the quarterfinals of the NCAA Tournament. Over the last six seasons, more than 55,000 fans have packed the stands to make Dick Dlesk Soccer Stadium one of the toughest environments in the Big 12.

Top 10 Crowds for Women's Soccer  
at Dick Dlesk Soccer Stadium (2004-present)

Date	Crowd	Opponent	Result
11/30/07	3,000+	No. 8 USC**	L, 0-1
8/31/12	2,057	No. 6 Penn State	L, 1-2
8/29/14	2,045	No. 21 Duke	L, 0-2
8/26/16	2,019	No. 8 Clemson	W, 1-0
11/12/10	1,688	Morehead State**	W, 2-0
9/25/15	1,617	Texas	W, 2-0
9/21/08	1,615	No. 6 Virginia	W, 3-0
11/16/13	1,610	Rutgers**	T, 0-0 2OT (WVU won PK, 3-0)
10/4/13	1,553	Texas	W, 2-1
11/6/11	1,550	Louisville*	W, 2-0

\* Big East Tournament\*\* NCAA Tournament

### WVU Scoring Breakdown

1st-15th minute:	WVU 0	Opponents 0
16th-30th minute:	WVU 2	Opponents 1
31st-45th minute:	WVU 0	Opponents 0
46th-60th minute:	WVU 2	Opponents 1
61st-75th minute:	WVU 1	Opponents 0
76th-90th minute:	WVU 2	Opponents 0
First Overtime:	WVU 0	Opponents 0
Second Overtime:	WVU 0	Opponents 0

### WVU Win/Loss/Tie Breakdown

	Wins (3)	Losses (0)	Ties (1)
Goals (avg.):	6 (2.0)	0 (0.0)	1 (1.0)
Assists (avg.):	4 (1.33)	0 (0.0)	2 (2.0)
Shots (avg.):	87 (29.0)	0 (0.0)	14 (14.0)
Shots on goal (avg.):	31 (10.33)	0 (0.0)	7 (7.0)
Corner kicks (avg.):	23 (7.67)	0 (0.0)	4 (4.0)
Yellow/Red cards:	0/0	0/0	1/0
Saves (avg.):	4 (1.33)	0 (0.0)	9 (9.0)
Allowed 0-1 goals:	2	0	1
Allowed 2+ goals:	0	0	0

### WVU Game-Winning Goals By Period

First Half:	1
Second Half:	2
Overtime:	0

## NCAA Tournament Appearance Streak

North Carolina	34
Notre Dame	23
Virginia	22
Penn State*	21
Texas A&M	21
Stanford	18
<b>West Virginia</b>	<b>16</b>
Florida State	16
Florida	13
California	12

\*Denotes 2016 Opponent



**Sweet 16:** The Mountaineers' bid to the 2015 NCAA Tournament was their 16th straight, the seventh-longest active streak in the nation. WVU has advanced to the round of 16 four times and the quarterfinals twice.

**LAST TIME.....****A WVU Team (Single Game)**

Defeated Ranked Opponent vs. No. 8 Clemson, 1-0 (8/26/16)  
 Defeated Ranked Opponent/Home vs. No. 8 Clemson, 1-0 (8/26/16)  
 Defeated Ranked Opponent/Away at No. 16/13 Texas Tech, 4-1 (10/11/15)  
 Defeated Ranked Opponent/Neutral vs. No. 1 Stanford, 1-0 (8/26/12)  
 (at Penn State Invitational, University Park, Pa.)

Defeated Opponent in 1OT at Oklahoma State, 2-1 (10/23/15)  
 Defeated Opponent in 2OT vs. Oklahoma State, 2-1 (10/24/14)  
 Lost to Opponent in 1OT vs. Notre Dame, 3-2 (10/2/09)  
 Lost to Opponent in 2OT vs. Penn State, 2-1 (8/31/12)  
 Ended Match in Tie at Penn State, 1-1 (2OT) (8/19/16)  
 Ended Match in Scoreless Tie at Oklahoma, 0-0 (2OT) (10/9/15)  
 Ended Match in Penalty Kicks vs. Georgetown, T 0-0 (2OT), lost 4-3 (11/15/14)

Won Five-Consecutive Matches 5 wins (Oct. 11 - Nov. 4, 2015)  
 Lost Five-Consecutive Matches No instances on record

Four Goals 5, vs. Loyola Marymount, W 5-2 (11/22/15)  
 Five Goals vs. Loyola Marymount, W 5-2 (11/22/15)  
 Six Goals vs. Kansas, W 6-0 (10/16/15)  
 Seven Goals vs. Villanova, W 8-0 (9/6/15)  
 Eight Goals vs. Villanova, W 8-0 (9/6/15)  
 Four Assists 6, vs. Loyola Marymount, W 5-2 (11/22/15)  
 Five Assists 6, vs. Loyola Marymount, W 5-2 (11/22/15)  
 Six Assists vs. Loyola Marymount, W 5-2 (11/22/15)  
 Seven Assists 8, vs. Villanova, W 8-0 (9/6/15)  
 Eight Assists vs. Villanova, W 8-0 (9/6/15)

20-29 Shots 43, vs. Saint Francis, W 3-1 (8/28/16)  
 30-39 Shots 43, vs. Saint Francis, W 3-1 (8/28/16)  
 40-49 Shots 43, vs. Saint Francis, W 3-1 (8/28/16)  
 0-10 Shots on Goal 8, vs. Clemson, W 1-0 (8/26/16)  
 10-14 Shots on Goal 17, vs. Saint Francis, W 3-1 (8/28/16)  
 15-19 Shots on Goal 17, vs. Saint Francis, W 3-1 (8/28/16)  
 0-2 Shot On Goal and Won 2, vs. Rutgers, W 1-0 (10/31/10)

5-9 Saves 9, at Penn State, T 1-1 (2OT) (8/19/16)  
 10-14 Saves 10, vs. Notre Dame, L 2-1 (OT) (9/22/00)  
 15-19 Saves 16, vs. Boston College, T 0-0 (2OT) (10/4/98)  
 0 Saves and Won vs. Buffalo, W 1-0 (OT) (9/18/15)

Held Opponents to No Shots vs. Longwood, W 4-0 (9/13/15)  
 Held Opponents to One Shot vs. Buffalo, W 1-0 (OT) (9/18/15)  
 Held Opponents to No Shots On Goal vs. Buffalo, W 1-0 (OT) (9/18/15)  
 Held Opponents to One Shot On Goal vs. Buffalo, W 2-0 (8/21/16)  
 (at Penn State Invitational, University Park, Pa.)

**A WVU player (Single Game)**

Two Goals Sh'Nia Gordon, vs. Saint Francis, W 3-1 (8/28/16)  
 Three Goals Kailey Utley, vs. Loyola Marymount, W 5-2 (11/22/15)  
 Four Goals Michaela Abam, vs. Villanova, W 8-0 (9/6/15)  
 Five Goals No Instances on Record

Two Assists Michaela Abam, vs. Loyola Marymount, W 5-2 (11/22/15)  
 Three Assists Kailey Utley (4), vs. Villanova, W 8-0 (9/6/15)  
 Four Assists Kailey Utley, vs. Villanova, W 8-0 (9/6/15)

Six Points Kailey Utley, vs. Loyola Marymount, W 5-2 (11/22/15)  
 Seven Points Michaela Abam (8), vs. Villanova, W 8-0 (9/6/15)  
 Eight Points Michaela Abam, vs. Villanova, W 8-0 (9/6/15)

Seven Shots Sh'Nia Gordon (9), vs. Saint Francis, W 3-1 (8/28/16)  
 Eight Shots Sh'Nia Gordon (9), vs. Saint Francis, W 3-1 (8/28/16)  
 10 Shots Michaela Abam (10), vs. Buffalo, W 1-0 (OT) (9/18/15)  
 10+ Shots Kate Schwindel (11), vs. TCU, W 3-2 (OT) (10/13/13)

Four Shots On Goal Michaela Abam, vs. Saint Francis, W 3-1 (8/28/16)  
 Five Shots On Goal Michaela Abam, vs. Villanova, W 8-0 (9/6/15)  
 Six Shots On Goal Megan Mischler, at Louisville, W 2-1 (10/3/10)  
 Seven Shots On Goal Kate Schwindel, vs. TCU, W 3-2 (OT) (10/13/13)  
 Eight Shots On Goal Kim Bonilla, vs. St. Bonaventure, W 8-0 (10/10/06)

Made a Penalty Kick Jess Crowder, vs. Elon, W 2-0 (8/31/14)  
 Missed a Penalty Kick Kadeisha Buchanan, vs. Northwestern, W 4-0 (11/20/15)

5-9 Saves 9, Rylee Foster at Penn State, T 1-1 (2OT) (8/19/16)  
 10-14 Saves 10, Melissa Haire vs. Notre Dame, L 2-1 (9/22/00)  
 15-19 Saves 16, Stacey Adams vs. Boston College, T 0-0 (2OT) (10/4/98)  
 0 Saves and Won Rylee Foster, vs. Buffalo, W 2-0 (8/21/16)  
 (at Penn State Invitational, University Park, Pa.)

**Defense Back for More:** Back to anchor the Mountaineer defense for one final season is three-time NSCAA All-America and three-time reigning Big 12 Defensive Player of the Year, senior center back Kadeisha Buchanan. Under her leadership, the WVU backline has allowed just 52 opponent goals since 2013, including a program-low 11 in 2015, the same season the unit also posted a school-record 15 shutouts.

Sophomore Bianca St. Georges, the reigning Big 12 Newcomer of the Year, also returned in 2016, as did senior Carly Black and sophomore Easter Mayi Kith. Black started 52 straight career matches prior to suffering a season-ending injury in 2015. Mayi Kith replaced her in the lineup and started the remaining 15 matches. Junior Amandine Pierre-Louis adds speed to the line this season.

Through four matches in 2016, the WVU has posted two shutouts and allowed just two opponent goals for a 0.47 GAA.

**No Shots for You:** The Mountaineers denied Longwood a shot in a 4-0 win on Sept. 13, 2015, marking the second time in as many seasons and the fifth time in program history that WVU denied an opponent a shot. The team also denied four opponents a shot on-goal last year.

**Foster Finds Early Success:** Freshman goalkeeper Rylee Foster played lights out in her WVU career debut, making nine saves at No. 2 Penn State on Aug. 19 to help the Mountaineers earn a 1-1, double-overtime draw against the defending National Champions.

Foster is 2-0-1 on the season and shows a 0.33 GAA and .917 save percentage.

**Goals Galore:** The Mountaineers returned 59 percent of the record-setting 61 goals scored in 2015, and the team's top-returning point earner opened 2016 scoring goals, as junior forward Michaela Abam netted the team's lone score in a 1-1 double-overtime draw at No. 2 Penn State on Aug. 19.

Senior midfielder Ashley Lawrence again drives the Mountaineers' offensive success. An NSCAA All-America First Team honoree one year ago, she now ranks No. 10 on the WVU all-time career assists lists with 20 helpers.

Sophomore forward Sh'Nia Gordon returns to the starting lineup after finishing 2015 tied for fourth on the team with 13 points (5 G, 3 A). Through four matches, she paces with five points (2 G, 1 A). Also returning is junior midfielder Carla Portillo, who started 21 matches and finished with 10 points (3 G, 4 A). Both were All-Big 12 honorees in 2015.

Expected to factor more into the Mountaineers' offensive plans this season are junior Heather Kaleiohi, sophomore Hannah Abraham and transfers Grace Cutler (Santa Clara) and Alli Magaletta (Missouri).



Score Often, Score Early: One of coach Nikki Izzo-Brown's weekly goals is for the Mountaineers to score first each game. Izzo-Brown not only urges the Mountaineers to score first - she also wants them to score fast.

WVU did just that in 2015, tallying six goals in the first four minutes, including the second-fastest score in school history, a goal by Ashley Lawrence 62 seconds into the Mountaineers' 2-1 win over TCU on Oct. 2.

#### All-Time Goals Scored In First Four Minutes

0:55	Kate Schwindel, September 30, 2011 (Away at Georgetown)
1:02	Ashley Lawrence, October 2, 2015 (Home vs. TCU)
1:17	Kambria Riggins, September 5, 2003 (Neutral vs. New Hampshire)
1:18	Bry McCarthy, August 17, 2012 (Home vs. La Salle)
1:23	Nia Gordon, September 6, 2015 (Home vs. Villanova)
1:29	Carolyn Blank, November 13, 2009 (Neutral vs. Loyola)
1:43	Laura Kane, October 6, 2002 (Home vs. Notre Dame)
1:47	Kim Bonilla, September 22, 2006 (Home vs. Syracuse)
1:57	Megan Mischler, September 21, 2008 (Home vs. Virginia)
2:31	Lisa Stoia, October 21, 2001 (Home vs. Georgetown)
2:44	Laura Kane, September 7, 2003 (Away at James Madison)
2:47	Kailey Utley, August 30, 2015 (Home vs. Duquesne)
2:52	Kate Schwindel, August 25, 2013 (Neutral vs. Syracuse)
2:54	Lisa Zanti, September 24, 2003 (Home vs. Binghamton)
3:12	Caroline Szwed, October 22, 2010 (Home vs. Connecticut)
3:17	Cathy Abel, November 14, 2004 (Away at Texas)
3:20	Kailey Utley, October 16, 2015 (Home vs. Kansas)
3:29	Carla Portillo, November 13, 2015 (Home vs. Duquesne)
3:32	Nia Gordon, August 30, 2015 (Home vs. Duquesne)
3:32	Katie Barnes, September 14, 1999 (Home vs. Virginia Tech)
3:53	Kailey Utley, September 5, 2014 (Home vs. Hofstra)
3:57	Blake Miller, November 4, 2011 (Home vs. Georgetown)
3:59	Robyn D'Aversa, October 21, 1998 (Home vs. Ohio)

Goal Record Set: As spectacular as the Mountaineer defense was in 2015, the offense was just as special. The Mountaineers set the program single-season goal record in their 4-0 victory over Northwestern in the NCAA Tournament Second Round on Nov. 20, at Dick Dlesk Dlesk Soccer Stadium. At season end, the record stood at 61 goals, besting the previous record of 55 set in 2006. Fourteen different Mountaineers scored at least one goal last season, including a team-best 12 from forwards Kailey Utley and Michaela Abam.

The Mountaineers have started to chase the record just four matches into the 2016 season, as they show seven goals scored for a 1.75 goals/game average.

#### Four+ Goal Games, by Season

Rank	Season	Four+ Goal Games	Final Record
1	2015	9	19-3-1
2	2006	8	14-4-3
3	2004	7	15-6
4	2002	6	18-3-1
5	2014	5	16-2-3
	2003	5	17-4-2
	1999	5	9-9-1
8	2013	4	16-3-4
	2011	4	17-4
	2007	4	18-5-2
	2001	4	15-5-1
	1997	4	11-6-2
	1996	4	10-7-2
14	2010	3	18-5-1
	2008	3	14-3-6
	2000	3	15-6
17	2012	2	11-5-4
18	2009	1	10-7-6
	2005	1	12-6-3
	1998	1	11-6-2

\*\*The Mountaineers are 81-0 all-time when scoring four or more goals.

## 2016 Mountaineer Accolades

### Michaela Abam

- Preseason All-Big 12 Soccer Team
- TDS.com Preseason No. 39

### Kadeisha Buchanan

- Rio Summer Olympics Bronze Medalist (Canada)
- MAC Hermann Trophy Candidate
- Big 12 Defensive Player of the Week (8/30)
- TDS.com Team of the Week (8/30)
- Preseason All-Big 12 Soccer Team
- TDS.com Preseason Best XI First Team
- TDS.com Preseason No. 2

### Rylee Foster

- WVU Student-Athlete of the Week (8/22)

### Coach Nikki Izzo-Brown

- Earned career win No. 300 with 2-0 victory over Buffalo on Aug. 21 (University Park, Pa.)
- Named to the TDS.com Top 10 Coaches in the Women's College Game List

### Ashley Lawrence

- Rio Summer Olympics Bronze Medalist (Canada)
- MAC Hermann Trophy Candidate
- Preseason All-Big 12 Soccer Team
- TDS.com Preseason Best XI First Team
- TDS.com Preseason No. 9

### Amandine Pierre-Louis

- TDS.com Team of the Week Honor Roll (8/23)

### Carla Portillo

- Preseason All-Big 12 Soccer Team
- TDS.com Preseason No. 66

## Mountaineers in the Record Book

### Career

#### Assists

1.	Lisa Stoia, 2000-03	33
2.	Katie Barnes, 1998-2001	30
3.	Ashley Banks, 2004-07	26
4.	Deana Everett, 2005-08	24
5.	Laura Kane, 2001-04	23
	Rachel Kruze, 1999-2002	23
7.	Kate Schwindel, 2011-14	22
	Frances Silva, 2010-13	22
9.	Kim Bonilla, 2004-07	21
10.	<b>Ashley Lawrence, 2013-present</b>	<b>20</b>
	Marisa Kanela, 2002-05	20

### Single Game

#### Goals

4	Michaela Abam, vs. Villanova	Sept. 6, 2015
---	------------------------------	---------------

#### Points

8	Michaela Abam, vs. Villanova	Sept. 6, 2015
---	------------------------------	---------------

**Taking Names:** With its 1-0 win against No. 8 Clemson in its 2016 home season opener at Dick Dlesk Soccer Stadium on Aug. 26, WVU has defeated at least one top-10 team in each of the last 12 seasons. WVU is 14-11-3 against top-10 teams and 23-27-9 against all ranked opponents since 2005.

Wins vs. the Top 10		
2016	No. 8 Clemson	W, 1-0
2015	No. 5 Penn State	W, 1-0
2014	at No. 9 Kansas	W, 2-0
2013	at No. 9 Baylor	W, 4-3
2012	No. 1 Stanford	W, 1-0
2012	No. 7 Oklahoma State	W, 1-0
2011	No. 9 Marquette	W, 3-1
2010	No. 9 Virginia	W, 1-0
2009	at No. 9 Rutgers	W, 1-0
2009	at No. 8 Penn State	W, 2-1
2008	No. 7 Virginia	W, 3-0
2007	at No. 6 Penn State	W, 1-0
2006	at No. 7 Penn State	W, 2-1
2005	at No. 9 Marquette	W, 2-0

**Home Points:** Big 12 or Big East, one fact has remained constant for the Mountaineers since 2009 - they do not lose home conference matches. WVU shows a 30-match unbeaten streak in conference games at Dick Dlesk Soccer Stadium and has not dropped a league contest since losing 3-2 in overtime to No. 8 Notre Dame on Oct. 2, 2009. WVU is 15-0-1 in all-time home Big 12 matches.

**Seniors' Last Stand:** The 2016 Mountaineer senior class has earned five conference titles during its time at WVU, the third-best total in the program's 21-year history.

This year's senior class – Carly Black, Kadeisha Buchanan, Ashley Lawrence and Ashley Woolpert – has won three straight Big 12 regular-season crowns and the 2013 and 2014 Big 12 Soccer Championship titles.

The program record for conference titles won by one class is seven, set by the 2014 senior class.

**New Faces:** Six student-athletes will don the Gold and Blue for the first time in 2016: transfers Grace Cutler (forward, Santa Clara) and Alli Magaletta (midfielder, Missouri), as well as freshmen Amanda Burns (midfielder), Rylee Foster (goalkeeper), Jade Gentile (midfielder/forward) and Brooke Myers (goalkeeper).

**Nice to Meet You:** WVU's 2016 regular-season schedule featured just one first-time opponent in Clemson. The Mountaineers defeated the No. 8 Tigers, 1-0, on Aug. 26, in their home season opener at Dick Dlesk Soccer Stadium.

In the program's 21-year history, WVU has faced 107 different teams.

**Power of Pink:** Raising awareness for breast cancer research is a cause close to coach Nikki Izzo-Brown, and each year, she and the Mountaineers raise funds for Morgantown's Betty Puskas Breast Care Center. In 2015, WVU donated a check for \$8,647 at halftime of the WVU-TCU contest on Oct. 2.

WVU passed the \$100,000 threshold in 2013. In 12 years, the Mountaineers have raised more than \$120,000 for breast cancer research.

## Record When Scoring Two or More Goals

1996	7-1-0
1997	6-0-1
1998	9-0-0
1999	9-0-0
2000	10-2-0
2001	13-0-0
2002	16-0-0
2003	16-1-0
2004	14-0-0
2005	9-1-0
2006	13-1-0
2007	12-0-0
2008	11-1-0
2009	4-1-0
2010	13-0-0
2011	13-0-0
2012	7-0-1
2013	14-2-1
2014	15-0-0
2015	15-0-0
2016	2-0
<b>All-Time</b>	<b>228-10-3</b>

\*17-6-1 against opponents ranked in the top 25 when scoring two or more goals

\*\*80% of program wins come when scoring two or more goals

## Last Time They Scored...

Player (Career Goal)	Opponent	Date
Sh'Nia Gordon (7)	Saint Francis	8/28/16
Kadeisha Buchanan (6)	Saint Francis	8/28/16
Amandine Pierre-Louis (8)	No. 8 Clemson	8/28/16
Grace Cutler (1)	vs. Buffalo	8/21/16
Heather Kaleiohi (3)	vs. Buffalo	8/21/16
Michaela Abam (21)	at No. 2 Penn State	8/19/16
Hannah Abraham (4)	Duquesne	11/13/15
Carla Portillo (3)	Duquesne	11/13/15
Ashley Lawrence (13)	Kansas	10/16/15
Carly Black (1)	Wright State	9/22/13

## The Mountaineers Are...

- 289-101-45 all-time, now in the program's 21st season;
- 169-33-17 all-time home record;
- 109-17-13 at Dick Dlesk Soccer Stadium;
- 88-54-23 all-time away record;
- 32-14-5 all-time neutral record;
- 9-9-3 all-time in season openers;
- 1-0-1 in 2016 versus ranked opponents;
- 0-0-1 in 2016 televised games;
- 1-0-1 in 2016 night games;
- 2-0-0 in 2016 day games (before 5 p.m.);
- 0-0-1 in 2016 overtime games;
- 2-0-0 in 2016 in games following a victory;
- 0-0-0 in 2016 in games following a loss;
- 1-0-0 in 2016 in games following a tie;
- 3-0-0 in 2016 when leading after 75 minutes;
- 0-0-1 in 2016 when trailing after 75 minutes;
- 0-0-0 in 2016 when tied after 75 minutes;
- 1-0-0 in 2016 when leading at the half;
- 2-0-1 in 2016 when tied at the half;
- 0-0-0 in 2016 when trailing at the half;
- 2-0-0 in 2016 when scoring first;
- 1-0-1 in 2016 when opponents score first;
- 1-0-1 in 2016 in one-goal games;
- 2-0-0 in 2016 when scoring 2 or more goals;
- 0-0-0 in 2016 when allowing 2 or more goals;
- 1-0-0 in 2016 when wearing white uniforms;
- 1-0-0 in 2016 when wearing navy uniforms;
- 1-0-1 in 2016 when wearing gold uniforms; and
- 0-0-0 in 2016 when wearing pink uniforms.



# Mountaineer Single-Game Highs

(Stats given for those that played a game for WVU in 2016; season high/career high)  
GP, GS = 2016 total/career total

<p><b>1 Michelle Newhouse (GK)</b> GP: 2/10 GS: 1/same MIN: 90:00 vs. Saint Francis (8/28)/same GA: 1 vs. Saint Francis (8/28)/same SO: 0/same Saves: 1 (2 times)/1 (4 times)</p>	<p><b>9 Ashley Lawrence (M)</b> GP: 2/68 GS: 1/64 G: 0/1 (13 times) A: 1 vs. Saint Francis (8/28)/2 (4 times) P: 1 vs. Saint Francis (8/28)/3 (2 times) SH: 3 (2 times)/6 vs. TCU (10/13/13) SoG: 2 vs. Saint Francis (8/28)/3 (3 times)</p>	<p><b>14 Patricia Fernandez (M)</b> GP: 3/10 GS: 1/same G: 0/same A: 0/same P: 0/same SH: 2 vs. Saint Francis (8/28)/2 (2 times) SoG: 1 vs. Saint Francis (8/28)/1 (2 times)</p>	<p><b>24 Carly Black (D)</b> GP: 4/56 GS: 4/56 G: 0/1 vs. Wright State (9/22/13) A: 0/1 (4 times) P: 0/2 vs. Wright State (9/22/13) SH: 1 (2 times)/4 vs. Texas (11/7/14) SoG: 1 vs. Saint Francis (8/28)/1 (6 times)</p>
<p><b>2 Jade Gentile (M/F)</b> GP: 3/same GS: 0/same G: 0/same A: 0/same P: 0/same SH: 2 vs. Saint Francis (8/28)/same SoG: 1 (3 times)/same</p>	<p><b>10 Carla Portillo (M)</b> GP: 4/48 GS: 25/same G: 0/1 (3 times) A: 1 vs. Saint Francis (8/28)/1 (7 times) P: 1 vs. Saint Francis (8/28)/3 vs. Longwood (9/13/15) SH: 2 vs. Saint Francis (8/28)/5 vs. Duquesne (9/14/14) SoG: 0/ 2 vs. TCU (10/2/15)</p>	<p><b>16 Easter Mayi-Kith (D)</b> GP: 4/24 GS: 4/20 G: 0/same A: 0/same P: 0/same SH: 0/same SoG: 0/same</p>	<p><b>25 Rylee Foster (GK)</b> GP: 3/same GS: 3/same MIN: 110:00 at Penn State (8/19)/same GA: 1 at Penn State (8/19)/same SO: 1/same Saves: 9 at Penn State (8/19)/same</p>
<p><b>4 Bianca St. Georges (D)</b> GP: 2/24 GS: 2/24 G: 0/same A: 0/ 1 (6 times) P: 0/ 1 (6 times) SH: 2 at Penn State (8/19)/4 at Oklahoma (10/9/15) SoG: 1 at Penn State (8/19)/2 at Oklahoma (10/9/15)</p>	<p><b>11 Amandine Pierre-Louis (D)</b> GP: 4/45 GS: 4/18 G: 1 vs. Clemson (8/26)/2 vs. Oklahoma (10/26/14) A: 1 (2 times)/ 2 vs. Kansas (10/16/15) P: 2 vs. Clemson (8/26)/4 vs. Oklahoma (10/26/14) SH: 4 vs. Clemson (8/26)/8 vs. Georgetown (9/12/14) SoG: 2 vs. Clemson (8/26)/5 vs. Georgetown (9/12/14)</p>	<p><b>18 Ashley Woolpert (F/M)</b> GP: 4/24 GS: 0/same G: 0/same A: 0/same P: 0/same SH: 1 vs. Buffalo (8/21)/1 (5 times) SoG: 0/1 vs. E. Kentucky (9/13/13)</p>	<p><b>26 Vanessa Flores (M)</b> GP: 4/12 GS: 2/same G: 0/same A: 1 at Penn State (8/19)/same P: 1 at Penn State (8/19)/same SH: 3 vs. Saint Francis (8/28)/same SoG: 1 vs. Saint Francis (8/28)/same</p>
<p><b>5 Michaela Abam (F)</b> GP: 4/49 GS: 4/33 G: 1 at Penn State (8/19)/4 vs. Villanova (9/6/15) A: 0/ 2 vs. Loyola Marymount (11/22/15) P: 2 at Penn State (8/19)/8 vs. Villanova (9/6/15) SH: 7 vs. Saint Francis (8/28)/10 (4 times) SoG: 4 (2 times)/5 vs. Villanova (9/6/15)</p>	<p><b>12 Macy Stalnaker (F/M)</b> GP: 2/6 GS: 1/same G: 0/same A: 0/same P: 0/same SH: 0/ 1 (3 times) SoG: 0/ 1 vs. Longwood (9/13/15)</p>	<p><b>19 Laurel Carpenter (M)</b> GP: 0/2 GS: 0/same G: 0/same A: 0/same P: 0/same SH: 0/same SoG: 0/same</p>	<p><b>88 Kadeisha Buchanan (D)</b> GP: 2/68 GS: 1/67 G: 1 vs. Saint Francis (8/28)/1 (6 times) A: 0/ 2 vs. Northwestern (11/20/15) P: 2 vs. Saint Francis (8/28)/2 (7 times) SH: 3 vs. Saint Francis (8/28)/3 (6 times) SoG: 1 vs. Saint Francis (8/28)/2 (2 times)</p>
<p><b>6 Heather Kaleiohi (F)</b> GP: 2/26 GS: 0/same G: 1 vs. Buffalo (8/21)/1 (3 times) A: 0/ 1 (2 times) P: 2 vs. Buffalo (8/21)/2 (3 times) SH: 5 vs. Buffalo (8/21)/same SoG: 2 vs. Buffalo (8/21)/ 2 (3 times)</p>	<p><b>13 Amanda Saymon (M)</b> GP: 1/3 GS: 0/same G: 0/same A: 0/same P: 0/same SH: 0/same SoG: 0/same</p>	<p><b>20 Hannah Abraham (F/D)</b> GP: 4/25 GS: 5/same G: 0/ 1 (4 times) A: 0/ 1 at Ohio State (9/11/15) P: 0/ 2 (4 times) SH: 2 (2 times)/2 (6 times) SoG: 1 vs. Buffalo (8/21)/ 1 (6 times)</p>	<p><b>97 Dalanda Ouendeno (D)</b> GP: 1/9 GS: 0/same G: 0/same A: 0/same P: 0/same SH: 0/ 1 vs. Longwood (9/13/15) SoG: 0/ 1 vs. Longwood (9/13/15)</p>
<p><b>7 Grace Cutler (F)</b> GP: 4/same GS: 0/same G: 1 vs. Buffalo (8/21)/same A: 0/same P: 2 vs. Buffalo (8/21)/same SH: 5 vs. Saint Francis (8/28)/same SoG: 2 vs. Saint Francis (8/28)/same</p>		<p><b>22 Alli Magaletta (M)</b> GP: 4/same GS: 4/same G: 0/same A: 0/same P: 0/same SH: 2 vs. Saint Francis (8/28)/same SoG: 0/same</p>	<p><b>99 Sh'Nia Gordon (F)</b> GP: 4/27 GS: 4/27 G: 2 vs. Saint Francis (8/28)/same A: 1 vs. Buffalo (8/21)/1 (4 times) P: 4 vs. Saint Francis (8/28)/same SH: 9 vs. Saint Francis (8/28)/same SoG: 3 vs. Saint Francis (8/28)/3 (2 times)</p>

## Mountaineer Individual Statistics

(Stats given for those that have played at least one career game at WVU; 2016 total/career total)

<b>1 Michelle Newhouse (GK)</b> Saves: 2/4 Goals Against: 1/1 Shutouts: 0/0	<b>9 Ashley Lawrence (M)</b> Goals: 0/13 Assists: 1/20 Points: 1/46	<b>16 Easter Mayi-Kith (D)</b> Goals: 0/0 Assists: 0/0 Points: 0/0	<b>25 Rylee Foster (GK)</b> Saves: 11/11 Goals Against: 1/1 Shutouts: 1/1
<b>2 Jade Gentile (M/F)</b> Goals: 0/0 Assists: 0/0 Points: 0/0	<b>10 Carla Portillo (M)</b> Goals: 0/3 Assists: 1/7 Points: 1/13	<b>18 Ashley Woolpert (F/M)</b> Goals: 0/0 Assists: 0/0 Points: 0/0	<b>26 Vanessa Flores (M)</b> Goals: 0/0 Assists: 1/1 Points: 1/1
<b>4 Bianca St. Georges (D)</b> Goals: 0/0 Assists: 0/6 Points: 0/6	<b>11 Amandine Pierre-Louis (D)</b> Goals: 1/8 Assists: 2/8 Points: 4/24	<b>19 Laurel Carpenter (M)</b> Goals: 0/0 Assists: 0/0 Points: 0/0	<b>88 Kadeisha Buchanan (D)</b> Goals: 1/6 Assists: 0/6 Points: 2/18
<b>5 Michaela Abam (F)</b> Goals: 1/21 Assists: 0/4 Points: 2/46	<b>12 Macy Stalnaker (F/M)</b> Goals: 0/0 Assists: 0/0 Points: 0/0	<b>20 Hannah Abraham (F/D)</b> Goals: 0/4 Assists: 0/1 Points: 0/9	<b>97 Dalanda Ouendeno (D)</b> Goals: 0/0 Assists: 0/0 Points: 0/0
<b>6 Heather Kaleiohi (F)</b> Goals: 1/3 Assists: 0/2 Points: 2/8	<b>13 Amanda Saymon (M)</b> Goals: 0/0 Assists: 0/0 Points: 0/0	<b>22 Alli Magaletta (M)</b> Goals: 0/0 Assists: 0/6 Points: 0/6	<b>99 Sh'Nia Gordon (F)</b> Goals: 2/7 Assists: 1/4 Points: 18/18
<b>7 Grace Cutler (F)</b> Goals: 1/1 Assists: 0/0 Points: 2/2	<b>14 Patricia Fernandez (M)</b> Goals: 0/0 Assists: 0/0 Points: 0/0	<b>24 Carly Black (D)</b> Goals: 0/1 Assists: 0/4 Points: 0/6	

## Mountaineer Numbers to Know

<u><b>Team Season Highs</b></u> <b>Points:</b> 8 vs. Saint Francis (8/28) <b>Goals:</b> 3 vs. Saint Francis (8/28) <b>Assists:</b> 2 (3 times) <b>Shots:</b> 43 vs. Saint Francis (8/28) <b>Shots on Goal:</b> 17 vs. Saint Francis (8/28) <b>Saves:</b> 9 at Penn State (8/19) <b>Corner Kicks:</b> 12 vs. Buffalo (8/21) <b>Fouls:</b> 9 (3 times)	<u><b>Team Season Lows</b></u> <b>Points:</b> 2 vs. Clemson (8/26) <b>Goals:</b> 2 (2 times) <b>Assists:</b> 0 vs. Clemson (8/26) <b>Shots:</b> 14 at Penn State (8/19) <b>Shots on Goal:</b> 6 vs. Buffalo (8/21) <b>Saves:</b> 1 (2 times) <b>Corner Kicks:</b> 2 vs. Clemson (8/26) <b>Fouls:</b> 4 vs. Saint Francis (8/28)	<u><b>Opponent Season Highs</b></u> <b>Points:</b> 3 by Saint Francis (8/28) <b>Goals:</b> 1 (2 times) <b>Assists:</b> 1 by Saint Francis (8/28) <b>Shots:</b> 17 by Penn State (8/19) <b>Shots on Goal:</b> 10 by Penn State (8/19) <b>Saves:</b> 14 by Saint Francis (8/28) <b>Corner Kicks:</b> 5 by Clemson (8/26) <b>Fouls:</b> 7 (2 times)	<u><b>Opponent Season Lows</b></u> <b>Points:</b> 0 (2 times) <b>Goals:</b> 0 (2 times) <b>Assists:</b> 0 (2 times) <b>Shots:</b> 3 (2 times) <b>Shots on Goal:</b> 1 by Buffalo (8/21) <b>Saves:</b> 4 by Buffalo (8/21) <b>Corner Kicks:</b> 1 (2 times) <b>Fouls:</b> 4 by Saint Francis (8/28)
--	---	--	--

# 2016 Box Scores

## Soccer Box Score (Final)

### West Virginia University Women's Soccer

#### #6 West Virginia vs #2 Penn State (Aug 19, 2016 at University Park, Pa.)

West Virginia (0-0-1) vs.  
Penn State (0-0-1)  
Date: Aug 19, 2016 • Attendance: 5791  
Weather: 81 degrees, sunny

Po #	Player	Sh	SO	G	A	Fo
gk 25	Rylee Foster	-	-	-	-	-
d 4	Bianca St. Georges	2	1	-	-	-
f 5	Michaela Abam	5	4	1	-	-
m 10	Carla Portillo	-	-	-	-	-
f 11	A. Pierre-Louis	1	1	-	1	-
m 14	Patricia Fernandez	-	-	-	-	-
d 16	Easther Mayi Kith	-	-	-	-	-
d 20	Hannah Abraham	-	-	-	-	-
m 22	Alli Magaletta	1	-	-	-	-
d 24	Carly Black	-	-	-	-	-
f 99	Sh'Nia Gordon	3	1	-	-	-
-- Substitutes --						
6	Heather Kaleiohi	1	-	-	-	-
7	Grace Cutler	-	-	-	-	-
18	Ashley Woolpert	-	-	-	-	-
26	Vanessa Flores	1	-	-	1	-
Totals		14	7	1	2	9

#	Goalkeepers	Min	GA	Saves
25	Rylee Foster	110:00	1	9

Shots by period	1	2	OT	O2	Total
West Virginia	5	7	1	1	14
Penn State	5	6	4	2	17

Corner kicks	1	2	OT	O2	Total
West Virginia	0	2	0	2	4
Penn State	2	0	0	1	3

#### Scoring summary:

No.	Time	Team	Goal scorer	Assist	Description
1.	50:50	PSU	Laura Freigang (1)	(unassisted)	16 yards out, center hit, left post and in
2.	76:59	WVU	Michaela Abam (1)	Vanessa Flores	6 yards out, from left side of the box, and keeper

#### Cautions and ejections:

YC-WVU #16 (98:06)

West Virginia-Rylee Foster (0-0-1). Penn State-Amanda Dennis (0-0-1).

Stadium: Jeffrey Field  
Officials: Referee: Ron Dambrosia; Asst. Referee: Robert Sheker; Paul Wehrman;  
Alt. Official: Kyle Petty; Scorer: Will Rottler;  
Offsides: West Virginia 5, Penn State 3.

Official's signature

## Soccer Box Score (Final)

### West Virginia University Women's Soccer

#### #8 Clemson vs #6 West Virginia (Aug 26, 2016 at Morgantown, W.Va.)

Clemson (2-1) vs.  
West Virginia (2-0-1)  
Date: Aug 26, 2016 • Attendance: 2019  
Weather: Hot, muggy

Po #	Player	Sh	SO	G	A	Fo
gk 1	Kailen Sheridan	-	-	-	-	-
d 4	Katie Sprouse	1	-	-	-	-
d 5	Claire Wagner	-	-	-	-	-
m 7	Shannon Horgan	1	1	-	-	-
m 11	Catrina Atanda	1	-	-	-	-
d 15	Sam Staab	1	1	-	-	-
m 16	Julie Mackin	-	-	-	-	-
f 20	Jenna Weston	2	-	-	-	-
m 21	Abby Jones	-	-	-	-	-
d 27	Gabby Byorth	-	-	-	-	-
d 28	Emily Byorth	-	-	-	-	-
-- Substitutes --						
2	Miranda Weslake	-	-	-	-	-
3	Mac Smith	-	-	-	-	-
8	Paige Reckert	-	-	-	-	-
9	Sarah Osborne	-	-	-	-	-
10	Alana Hockenhill	-	-	-	-	-
14	Allie Kingston	-	-	-	-	-
19	Jenna Polonsky	-	-	-	-	-
23	Tori Andreski	-	-	-	-	-
Totals		6	2	0	0	7

#	Goalkeepers	Min	GA	Saves
1	Kailen Sheridan	90:00	1	7

Shots by period	1	2	Total
Clemson	3	3	6
West Virginia	9	9	18

Corner kicks	1	2	Total
Clemson	2	3	5
West Virginia	2	0	2

#### Scoring summary:

No.	Time	Team	Goal scorer	Assist	Description
1.	56:55	WVU	A. Pierre-Louis (1)	(unassisted)	dribbles through crowd, sends shot toward right post

#### Cautions and ejections:

YC-CU #11 (69:02)

Win-Rylee Foster (2-0-1). Loss-Kailen Sheridan (0-1).

Stadium: Dick Diesk Stadium

Officials: Referee: Corey Rockwell; Asst. Referee: Tom Manspeaker; Ron Dambrosia;  
Alt. Official: Devon Dulling; Timekeeper: Samantha Strejcek; Scorer: Shannon McNamara;  
Offsides: Clemson 3, West Virginia 0.

Official's signature

## Soccer Box Score (Final)

### West Virginia University Women's Soccer

#### #6 West Virginia vs Buffalo (Aug 21, 2016 at University Park, Pa.)

West Virginia (1-0-1) vs.  
Buffalo (0-2-0)  
Date: Aug 21, 2016 • Attendance:  
Weather: 72, rainy

Po #	Player	Sh	SO	G	A	Fo
gk 25	Rylee Foster	-	-	-	-	-
d 4	Bianca St. Georges	1	-	-	-	-
f 5	Michaela Abam	5	1	-	-	-
m 10	Carla Portillo	-	-	-	-	-
f 11	A. Pierre-Louis	3	-	-	1	-
d 16	Easther Mayi Kith	-	-	-	-	-
d 20	Hannah Abraham	2	1	-	-	-
m 22	Alli Magaletta	-	-	-	-	-
d 24	Carly Black	1	-	-	-	-
m 26	Vanessa Flores	-	-	-	-	-
f 99	Sh'Nia Gordon	3	-	-	1	-
-- Substitutes --						
1	Michelle Newhouse	-	-	-	-	-
2	Jade Gentile	1	1	-	-	-
6	Heather Kaleiohi	5	2	1	-	-
7	Grace Cutler	3	1	1	-	-
12	Macy Stalaker	-	-	-	-	-
14	Patricia Fernandez	-	-	-	-	-
18	Ashley Woolpert	1	-	-	-	-
Totals		26	6	2	2	

#	Goalkeepers	Min	GA	Saves
25	Rylee Foster	72:29	0	0
1	Michelle Newhouse	17:31	0	1

Shots by period	1	2	Total
West Virginia	14	12	26
Buffalo	0	3	3

Corner kicks	1	2	Total
West Virginia	9	3	12
Buffalo	0	1	1

#### Scoring summary:

No.	Time	Team	Goal scorer	Assist	Description
1.	21:27	WVU	Heather Kaleiohi (1)	A. Pierre-Louis	cross from 11 from midfield into box, 6 fr yards out, right side
2.	67:25	WVU	Grace Cutler (1)	Sh'Nia Gordon	7 from 99, six yards out, bottom-left corner

#### Cautions and ejections:

Win-Rylee Foster (1-0-1). Loss-Laura Dougall (0-2-0).

Stadium: Jeffrey Field

Officials: Referee: John McCloskey; Asst. Referee: Bruce Shanaman; Kyle Petty;  
Alt. Official: Tim Deljanovan; Scorer: Will Rottler;  
Offsides: West Virginia 0, Buffalo 3.

Official's signature

## Soccer Box Score (Final)

### West Virginia University Women's Soccer

#### Saint Francis vs #6 West Virginia (Aug 28, 2016 at Morgantown, W.Va.)

Saint Francis (0-4) vs.  
West Virginia (3-0-1)  
Date: Aug 28, 2016 • Attendance: 682  
Weather: Hot, sunny and muggy

Po #	Player	Sh	SO	G	A	Fo
gk 1	HERNAN, Julia	-	-	-	-	-
m 2	HARDIN, Leah	-	-	-	-	-
f 4	GALLAHER, CASEY	-	-	-	-	-
d 9	MORALES, Gabi	-	-	-	-	-
d 10	BROSS, Siobhan	-	-	-	-	-
m 13	SULER, Sara	1	1	-	1	-
f 14	McGHEE, Alyssa	-	-	-	-	-
f 17	TAROSKY, Abigail	-	-	-	-	-
d 22	McGINNIS, Shannon	1	1	1	-	-
f 24	LaDUKE, Allison	-	-	-	-	-
d 28	MILTON, Shelby	-	-	-	-	-
-- Substitutes --						
6	KRIEG, Joelle	-	-	-	-	-
8	SPANGLER, Natalie	-	-	-	-	-
19	KELLER, Jessica	1	-	-	-	-
20	MARCHANT, Hannah	-	-	-	-	-
29	FIERRO, Emilee	-	-	-	-	-
26	THORP, Heather	-	-	-	-	-
Totals		3	2	1	1	4

#	Goalkeepers	Min	GA	Saves
1	HERNAN, Julia	90:00	3	13
TM	TEAM	0:00	0	1

Shots by period	1	2	Total
Saint Francis	3	0	3
West Virginia	21	22	43

Corner kicks	1	2	Total
Saint Francis	1	0	1
West Virginia	4	5	9

#### Scoring summary:

No.	Time	Team	Goal scorer	Assist	Description
1.	15:06	SFUWS	McGINNIS, Shannon (1)	SULER, Sara	(unassisted)
2.	29:04	WVU	Sh'Nia Gordon (1)	(unassisted)	
3.	54:24	WVU	Kadeisha Buchanan (1)	Carla Portillo	Takes ball up left flank, first shot saved, s goes far right
4.	87:44	WVU	Sh'Nia Gordon (2)	Ashley Lawrence	From CK, heads ball in front of net hits CB bounces in

#### Cautions and ejections:

Win-Michelle Newhouse (1-0). Loss-HERNAN, Julia (0-4).

Stadium: Dick Diesk Stadium

Officials: Referee: Amadou Diop; Asst. Referee: Gregg Day; Lucas Feathers;  
Alt. Official: Ross Kleinstuber; Timekeeper: Samantha Strejcek; Scorer: Shannon McNamara;  
Offsides: Saint Francis 0, West Virginia 1.

Official's signature

**West Virginia University Women's Soccer**  
**West Virginia Combined Team Statistics (as of Aug 28, 2016)**  
**All games**

<b>RECORD:</b>	<b>OVERALL</b>	<b>HOME</b>	<b>AWAY</b>	<b>NEUTRAL</b>
ALL GAMES	3-0-1	2-0	0-0-1	1-0
CONFERENCE	0-0	0-0	0-0	0-0
NON-CONFERENCE	3-0-1	2-0	0-0-1	1-0

<b>Date</b>	<b>Opponent</b>		<b>Score</b>	<b>Att.</b>	<b>#</b>	<b>Player</b>	<b>gp</b>	<b>g</b>	<b>a</b>	<b>pts</b>	<b>sh</b>	<b>sh%</b>	<b>sog</b>	<b>sog%</b>	<b>gw</b>	<b>pk-att</b>
Aug 19	at #2 Penn State	To2	1-1	5791	99	Sh'Nia Gordon	4	2	1	5	19	.105	6	.316	0	0-0
Aug 21	vs Buffalo	w	2-0	0	11	A. Pierre-Louis	4	1	2	4	10	.100	4	.400	1	0-0
Aug 26	#8 CLEMSON	w	1-0	2019	5	Michaela Abam	4	1	0	2	21	.048	11	.524	0	0-0
Aug 28	SAINT FRANCIS	w	3-1	682	7	Grace Cutler	4	1	0	2	8	.125	3	.375	0	0-0
					6	Heather Kaleiohi	2	1	0	2	6	.167	2	.333	1	0-0
					88	Kadeisha Buchanan	2	1	0	2	4	.250	1	.250	1	0-0
					9	Ashley Lawrence	2	0	1	1	6	.000	3	.500	0	0-0
					26	Vanessa Flores	4	0	1	1	5	.000	1	.200	0	0-0
					10	Carla Portillo	4	0	1	1	2	.000	0	.000	0	0-0
					20	Hannah Abraham	4	0	0	0	5	.000	1	.200	0	0-0
					2	Jade Gentile	3	0	0	0	4	.000	3	.750	0	0-0
					22	Alli Magaletta	4	0	0	0	3	.000	0	.000	0	0-0
					4	Bianca St. Georges	2	0	0	0	3	.000	1	.333	0	0-0
					24	Carly Black	4	0	0	0	2	.000	1	.500	0	0-0
					14	Patricia Fernandez	3	0	0	0	2	.000	1	.500	0	0-0
					18	Ashley Woolpert	4	0	0	0	1	.000	0	.000	0	0-0
					97	Dalanda Ouendeno	1	0	0	0	0	.000	0	.000	0	0-0
					25	Rylee Foster	3	0	0	0	0	.000	0	.000	0	0-0
					16	Easter Mayi Kith	4	0	0	0	0	.000	0	.000	0	0-0
					13	Amanda Saymon	1	0	0	0	0	.000	0	.000	0	0-0
					12	Macy Stalnaker	2	0	0	0	0	.000	0	.000	0	0-0
					1	Michelle Newhouse	2	0	0	0	0	.000	0	.000	0	0-0
					Total		4	7	6	20	101	.069	38	.376	3	0-0
					Opponents		4	2	1	5	29	.069	15	.517	0	0-0

<b>TEAM STATISTICS</b>	<b>WVU</b>	<b>OPP</b>
<b>SHOT STATISTICS</b>		
Goals-Shot attempts	7-101	2-29
Goals scored per game	1.75	0.50
Shot pct.	.069	.069
Shots on goal-Attempts	38-101	15-29
SOG pct.	.376	.517
Shots/Game	25.2	7.2
CORNER KICKS	27	10
PENALTY KICKS	0-0	0-0
<b>PENALTIES</b>		
Yellow cards	1	1
Red cards	0	0
<b>ATTENDANCE</b>		
Total	2701	5791
Dates/Avg Per Date	2/1350	1/5791
Neutral Site #/Avg	1/0	

<b>#</b>	<b>Goalie</b>	<b>GP</b>	<b>Min.</b>	<b>GA</b>	<b>GAAvg</b>	<b>Saves</b>	<b>Pct</b>	<b>W-L-T</b>	<b>Sho</b>
25	Rylee Foster	3	272:29	1	0.33	11	.917	2-0-1	1/1
1	Michelle Newhouse	2	107:31	1	0.84	2	.667	1-0-0	0/1
	Total	4	380:00	2	0.47	13	.867	3-0-1	2
	Opponents	4	380:00	7	1.66	31	.816	0-3-1	0

<b>Goals by Period</b>	<b>1st</b>	<b>2nd</b>	<b>OT</b>	<b>OT2</b>	<b>Total</b>
West Virginia	2	5	0	0	7
Opponents	1	1	0	0	2

<b>Shots by Period</b>	<b>1st</b>	<b>2nd</b>	<b>OT</b>	<b>OT2</b>	<b>Total</b>
West Virginia	49	50	1	1	101
Opponents	11	12	4	2	29

<b>Saves by Period</b>	<b>1st</b>	<b>2nd</b>	<b>OT</b>	<b>OT2</b>	<b>Total</b>
West Virginia	4	6	3	0	13
Opponents	20	11	0	0	31

<b>Corners by Period</b>	<b>1st</b>	<b>2nd</b>	<b>OT</b>	<b>OT2</b>	<b>Total</b>
West Virginia	15	10	0	2	27
Opponents	5	4	0	1	10

<b>Fouls by Period</b>	<b>1st</b>	<b>2nd</b>	<b>OT</b>	<b>OT2</b>	<b>Total</b>
West Virginia	9	19	2	1	31
Opponents	14	7	0	3	24



## Mountaineer Photo Roster



**Michelle Newhouse**  
5-8 | Jr. | GK



**Jade Gentile**  
5-4 | Fr. | M/F



**Brooke Myers**  
5-11 | Fr. | GK



**Bianca St. Georges**  
5-5 | So. | D



**Michaela Abam**  
5-7 | Jr. | F



**Heather Kaleiohi**  
5-7 | Jr. | F



**Grace Cutler**  
5-9 | So. | F



**Ashley Lawrence**  
5-6 | Sr. | M



**Carla Portillo**  
5-1 | Jr. | M



**Amandine Pierre-Louis**  
5-7 | Jr. | D



**Macy Stalnaker**  
5-4 | So. | F/M



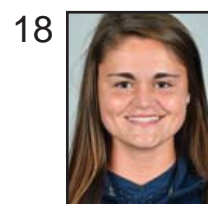
**Amanda Saymon**  
5-5 | So. | M



**Patricia Fernandez**  
5-0 | So. | M



**Easter Mayi Kith**  
5-6 | So. | D



**Ashley Woolpert**  
5-7 | Sr. | F/M



**Laurel Carpenter**  
5-9 | So. | M



**Hannah Abraham**  
5-5 | So. | F/D



**Alli Magaletta**  
5-6 | Jr. | M



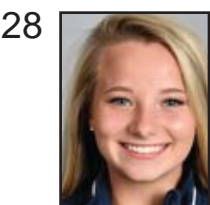
**Carly Black**  
5-8 | Sr. | D



**Rylee Foster**  
5-9 | Fr. | GK



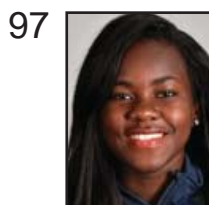
**Vanessa Flores**  
5-7 | So. | M



**Amanda Burns**  
5-0 | Fr. | M



**Kadeisha Buchanan**  
5-7 | Sr. | D



**Dalanda Ouendeno**  
5-5 | So. | D



**Sh'Nia Gordon**  
5-7 | So. | F



**Head Coach**  
**Nikki Izzo-Brown**  
21st Season



**Associate Head Coach**  
**Lisa Stoia**  
10th Season



**Assistant Coach**  
**Marisa Kanela**  
Seventh Season



**Volunteer Assistant**  
**Zach Johnson**  
Sixth Season



**Graduate Assistant**  
**Hannah Steadman**  
First Season